

HEATH SURVEY TRACKER

Data Logging Software for the DP-IR® and the OMD™



The Heath Survey Tracker provides utility companies the opportunity to log mobile leak survey data and GPS locations of all natural gas leaks detected.

Data recorded includes:

- Username
- Date
- Time
- Location - based on GPS
- Alarm Levels
- Leak Detection Level
- Speed of Vehicle

EQUIPMENT NEEDED:

- Computer
- DP-IR or OMD
- Garmin Mobile PC CD
- Heath Survey Tracker CD
- Garmin's Global Positioning System (GPS) 20x Receiver
- Serial Cable

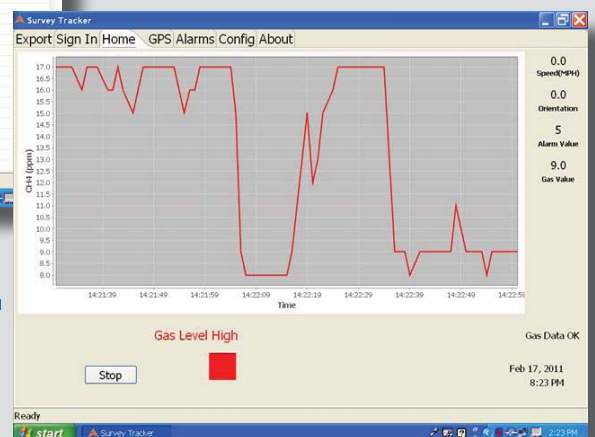


Number	Gas Value	Date	Time	Latitude	Longitude	Speed(MPH)
8.0		Feb 17, 2011	2:30 PM	29° 38' 14.322968"	-95° 15' 54.000200"	7.9
8.0		Feb 17, 2011	2:30 PM	29° 38' 14.322968"	-95° 15' 53.887939"	8.3
8.0		Feb 17, 2011	2:30 PM	29° 38' 14.343957"	-95° 15' 53.809542"	8.1
8.0		Feb 17, 2011	2:30 PM	29° 38' 14.343957"	-95° 15' 53.666213"	6.4
7.0		Feb 17, 2011	2:30 PM	29° 38' 14.322968"	-95° 15' 53.558350"	4.9
7.0		Feb 17, 2011	2:30 PM	00° 22' 00.000029"	00° 20' 59.999979"	3.5
7.0		Feb 17, 2011	2:30 PM	29° 38' 14.302868"	-95° 15' 53.399355"	6.7
7.0		Feb 17, 2011	2:30 PM	29° 38' 14.240570"	-95° 15' 53.256226"	7.5
7.0		Feb 17, 2011	2:30 PM	29° 38' 14.151306"	-95° 15' 53.201294"	8.7
7.0		Feb 17, 2011	2:30 PM	00° 22' 00.000029"	00° 14' 00.000004"	10.4
7.0		Feb 17, 2011	2:30 PM	29° 38' 13.807983"	-95° 15' 53.146362"	16.2
8.0		Feb 17, 2011	2:30 PM	29° 38' 13.501290"	-95° 15' 53.063965"	20.0
8.0		Feb 17, 2011	2:31 PM	29° 38' 13.724907"	-95° 15' 53.063965"	23.1
8.0		Feb 17, 2011	2:31 PM	29° 38' 12.915344"	-95° 15' 53.063965"	26.4
8.0		Feb 17, 2011	2:31 PM	29° 38' 12.523965"	-95° 15' 53.009033"	29.1
8.0		Feb 17, 2011	2:31 PM	29° 38' 12.305203"	-95° 15' 53.009033"	31.6
14.0		Feb 17, 2011	2:31 PM	29° 38' 11.631317"	-95° 15' 53.009033"	33.6
17.0		Feb 17, 2011	2:31 PM	00° 22' 00.000029"	00° 14' 00.000004"	3.5
18.0		Feb 17, 2011	2:31 PM	29° 38' 10.639681"	-95° 15' 52.981567"	36.7
17.0		Feb 17, 2011	2:31 PM	00° 22' 00.000029"	00° 14' 00.000004"	3.5
18.0		Feb 17, 2011	2:31 PM	29° 38' 09.550781"	-95° 15' 52.981567"	38.8
18.0		Feb 17, 2011	2:31 PM	29° 38' 08.987732"	-95° 15' 52.926636"	39.6
18.0		Feb 17, 2011	2:31 PM	29° 38' 08.404083"	-95° 15' 52.926636"	40.4
13.0		Feb 17, 2011	2:31 PM	29° 38' 07.820439"	-95° 15' 52.926636"	40.6
9.0		Feb 17, 2011	2:31 PM	29° 38' 07.236786"	-95° 15' 52.926636"	40.6
11.0		Feb 17, 2011	2:31 PM	29° 38' 06.653137"	-95° 15' 52.844238"	40.9
10.0		Feb 17, 2011	2:31 PM	29° 38' 06.048899"	-95° 15' 52.844238"	41.2
8.0		Feb 17, 2011	2:31 PM	29° 38' 05.451588"	-95° 15' 52.844238"	41.3
8.0		Feb 17, 2011	2:31 PM	29° 38' 04.847260"	-95° 15' 52.844238"	41.3
7.0		Feb 17, 2011	2:31 PM	29° 38' 04.246878"	-95° 15' 52.789303"	41.1
7.0		Feb 17, 2011	2:31 PM	29° 38' 03.649533"	-95° 15' 52.789303"	40.9
7.0		Feb 17, 2011	2:31 PM	29° 38' 03.075714"	-95° 15' 52.789303"	40.2
7.0		Feb 17, 2011	2:31 PM	29° 38' 02.490251"	-95° 15' 52.789303"	39.8
12.0		Feb 17, 2011	2:31 PM	00° 22' 00.000029"	00° 14' 00.000004"	10.4

Data chart created by Survey Tracker.



Acceptable gas level chart.



High gas level alarm chart.

Note:
The functionality of the Heath Survey tracker has been verified using the Garmin Mobile PC Kit, including Garmin's high-sensitivity GPS 20x Receiver. Other manufacturers may be considered for future use with the Heath Survey Tracker.

Heath Consultants Incorporated
713/844-1300 • Fax: 713/844-1309
1-800-HEATH-US
www.heathus.com

